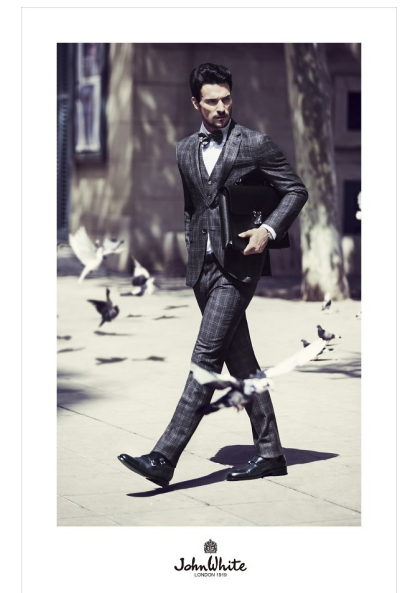
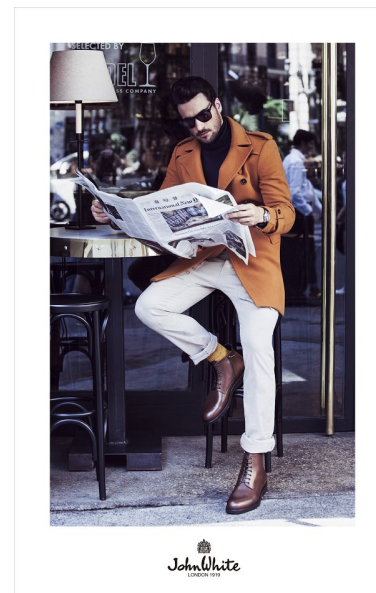




chris

Height 189cm/6'2.5" Chest 101cm/40" Waist 81cm/32" Shoe 44 EU/10
US/9.5 UK Hair Brown Eyes Blue/Grey



pulse.
MODEL MANAGEMENT

Pulse Model Management

2nd Floor, Lifestyle Centre, 50 Kloof St, Gardens, Cape Town
Office 1/9B, Level 1, 6-8 High St, Rosenpark, Durbanville